

PACKAGED ADCAMAT AUTOMATIC PUMP (SUITABLE FOR STEAM SUPPLY) POPK-S

DESCRIPTION

The POP-K packaged pump units can be used to lift or displace hot condensate and other liquids even in hazardous areas.

A POP-K packaged unit comprises an Adcamat pump, a vented receiver and all auxiliary items, compactly mounted on a metal frame piped and ready for connection.

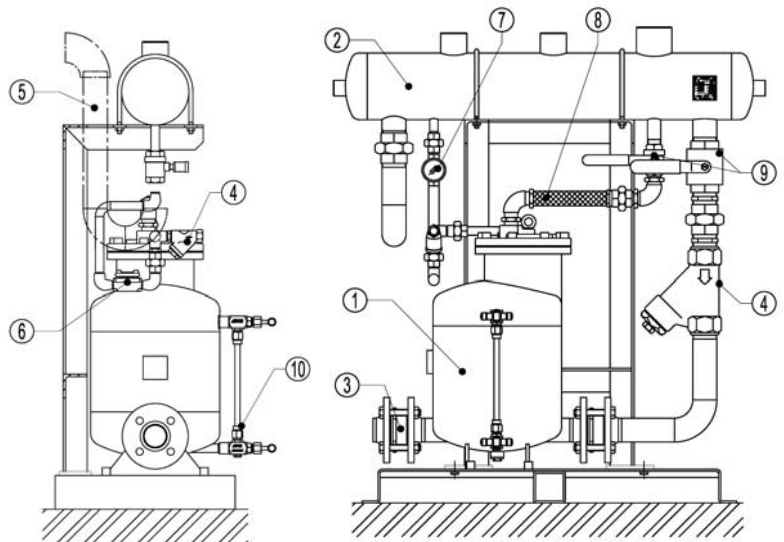
Packaged units save time, work and site costs. In addition they ensure that installation of the pump is correct in every detail.

Two or more units can be connected in parallel to cope with flow rates beyond the capacity of a single pump.

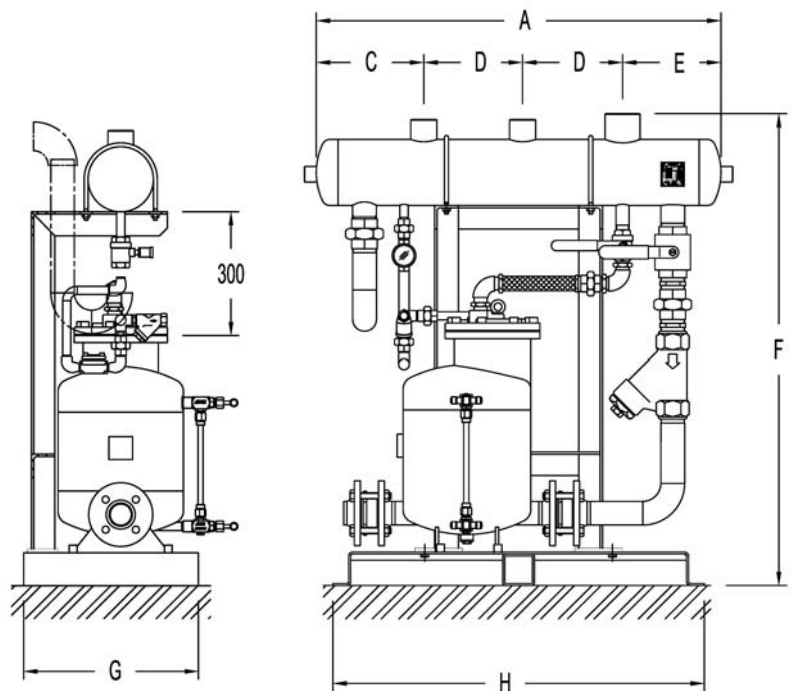
Units operating with compressed air are also available.

For operating conditions and pumping capacity, please refer to information sheet IS 9.101 E and IS 9.105 E.

How to order : i.e. ADCAMAT POPK-S DN 40



MATERIALS	
POS.	DESIGNATION
1	Pump
2	Receiver
3	Metal frame
4	IS 16 Strainer
5	Overflow
6	TH21 Steam trap
7	SW12 Sigh glass
8	Flexible hose
9	Ball valves
10	LGC 135I Level gauges



LIMITING CONDITIONS:

Receiver – Max. operating pressure: 0,5 bar

Pump: See IS 9.101 E

CONNECTIONS:

All connections are screwed except the pump connections which are flanged EN 1092-1 PN16.

Threaded flanges available on request.



DIMENSIONS (mm)								
DN	A	C	D	E	F	G	H	Wgt. Kgs
25	990	255	250	235	1210	450	940	145
40	1090	305	250	285	1210	450	940	154
50	1120	320	250	296	1260	450	940	188
80x50	1140	330	250	310	1330	535	1040	230