



# Technical Data Sheet Type 2/529



Type 2/529

2/2-way solenoid valve  
 NC - Valve normally closed (as standard)  
 NO - Valve normally open (as option)

Pilot operated piston design. The mentioned minimum pressure difference between inlet and outlet is necessary for proper operation.  
 In standard (NC) the valve closes with spring power.

■ Solenoid valve for high pressure applications

## TECHNICAL SPECIFICATIONS

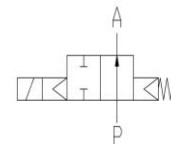
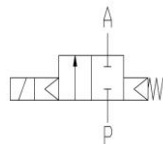
Type of control	Pilot operated, pressure difference is required
Design	Piston design
Connection	Threaded G1/4 - G2 DIN ISO 228/1 (BSP) <small>Other connections like NPT on request</small>
Installation	Preferable with actuator upright
Pressure	1 - 450 bar (see table page 2)
Medium	Clean, neutral, gaseous and liquid medium
Viscosity	22 mm <sup>2</sup> /s
Temperature range	Medium: -40 °C bis +80 °C Ambient: -40 °C bis +50 °C <small>In consideration of the restrictions described on page 4</small>
Body material	Stainless steel 1.4571
Metallic inner parts	Stainless steel
Sealing	PTFE, PEEK at the seat
Supply voltage	AC~ 24V, 110V, 230V DC= 12V, 24V <small>Other supply voltages on request</small>
Voltage tolerance	-10% / +10%
Power consumption	.802 = 24 Watt    .848 = 23 Watt ⚡ .322 = 30 Watt    .328 = 24 Watt ⚡ .242 = 46 Watt    .248 = 30 Watt ⚡
Type of control	IP65 acc. to DIN 60529
Duty factor	100% ED-VDE 0580
Connection type	Plug / Terminal box
Ex-proof	acc. to 2014/34/EG(ATEX) <small>Further Ex-proof on request</small>

## VALVE FEATURES

- For high pressure applications up to 450 bar
- Pressure difference is required
- High life time
- Simple compact valve design
- High-quality materials
- Reliable and sturdy sealing elements

## FUNCTION

NC – non energized closed      NO – non-energized open



## CERTIFICATES



Special design for a temperature range **up to +180 °C** and as pressure operating valve **up to 600 bar** available  
 Specifications and drawings on request.

## ORDERING SYSTEM

Valve type	Coil system	Options
2 / 5 2 9 - 2 3 - 0 8 1 5 -	. 3 2 2 -	H A
<b>Connection</b> 21 G 1/4 22 G 3/8 23 G 1/2 24 G 3/4 25 G 1 26 G 1 1/4 27 G 1 1/2 28 G 2	<b>Body material</b> 08 Edelstahl 1.4581  <b>Seal material</b> 15 PEEK	2 Standard IP65 8 Explosion-proof acc. to directive 2014/34/EU (ATEX)