



Technical Data Sheet Type 48



2/2-way solenoid valve
 NC - Valve normally closed (as standard)
 NO - Valve normally open (as option)

Direct operated piston design. No differential pressure is necessary for operation. When energized, the valve seat is opened directly. In standard (NC) the valve closes with spring power.

■ Solenoid valve for gaseous and liquid media

Type 48

TECHNICAL SPECIFICATIONS

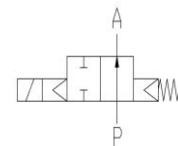
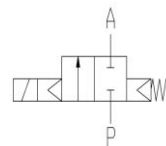
Type of control:	Direct operated, no pressure difference required
Design:	Poppet design
Connection:	Threaded Rp3/8 - Rp3 DIN 2999 (BSP) Other connections like NPT on request
Installation:	Actuator in upright position Lying position of actuator on request
Pressure:	0-5 bar (see table page 2)
Medium:	Clean, neutral, gaseous and liquid medium
Viscosity:	22 mm ² /s
Temperature range:	Medium: -40 °C bis +80 °C Ambient: -40 °C bis +50 °C <small>In consideration of the restrictions described on page 4</small>
Body material:	Brass 2.0402 Stainless steel 1.4581
Metallic inner parts:	Brass and stainless steel
Sealing:	NBR, FKM, PTFE, EPDM
Supply voltage:	AC~ 24V, 110V, 230V DC= 12V, 24V <small>Other supply voltages on request</small>
Voltage tolerance:	-10% / +10%
Power consumption:	.012 = 18 W .148 = 10 W ☹ .802 = 24 W .808 = 24 W ☹ .322 = 30 W .328 = 24 W ☹ .242 = 46 W .248 = 30 W ☹ .272 = 100 W .278 = 47 W ☹ .352 = 150 W .358 = 75 W ☹
Protection class:	IP65 according to DIN EN 60529
Duty factor:	100% ED-VDE 0580
Connection type:	Plug / Terminal box
Ex-proof:	acc. to 2014/34/EU (ATEX) <small>Further Ex-proof on request</small>

VALVE FEATURES

- No pressure difference required
- High life time
- Simple compact valve design
- High-quality materials
- Reliable and sturdy sealing elements
- Long-term availability of spare parts

FUNCTION

NC – non energized closed NO – non-energized open



CERTIFICATES



ORDERING SYSTEM

Valve type		Coil system	Valve options
. 4 8 2 3 / 1 0 0 1 /		. 8 0 2	- H A
Connection	Body material	2 Standard IP65	
58 G 3/8	10 Brass 2.0402	8 Explosion proof acc. to directive 2014/34/EU (ATEX)	
59 G 3/8	08 St. steel 1.4581		
68 G 1/2			
69 G 1/2	Seal material		
21 G 1/4	01 NBR		
22 G 3/8	02 FKM		
23 G 1/2	04 PTFE		
24 G 3/4	06 EPDM		
25 G 1			
26 G 1 1/4			
27 G 1 1/2			
28 G 2			
29 G 2 1/2			
30 G 3			